



ECRA

BY RICCO

The Socorro Twins—two residences, one elevated way of living

Villas by ECRA

“Goa is not measured in returns—it is measured in how it makes life feel.”

Goa: “A Living Legacy, Not a Passing Trend”

Goa’s strength as a second-home destination has never rested on beaches alone. It endures because people stay—to live, return, and belong. While markets rise and fall, Goa continues to evolve into a place for permanent lifestyles, not seasonal escapes.

Clean air, open landscapes, and pristine coastlines remain its natural advantage. Yet what truly sustains Goa’s appeal is its deeply rooted culture, preserved heritage, and welcoming communities—a social fabric that has remained intact even as the state modernises. Villages, traditions, and everyday rituals continue to define life here, creating stability that few destinations can replicate.

As infrastructure improves and buyers seek meaningful, slower living, Goa stands apart as India’s most mature and resilient second-home market. Not because it changes with trends—but because it stays true to itself.

Goa will always be chosen—not just for where it is, but for how it lives.

THE LOCATION STORY

Socorro

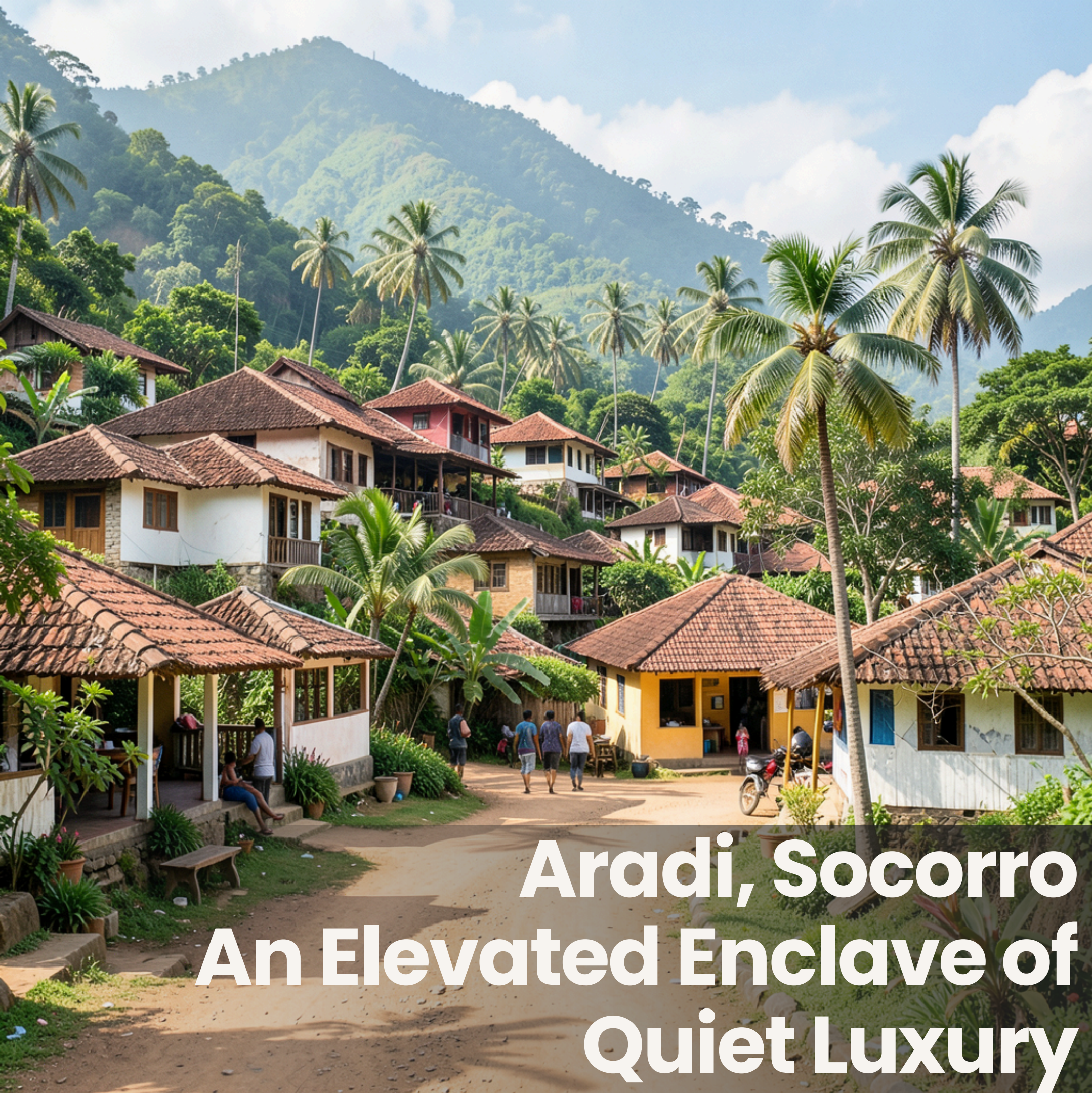
Set amidst gentle hills and verdant valleys just north of Panaji, Socorro (Succour) is one of Goa's most coveted residential enclaves—where timeless Goan heritage meets contemporary living.

Anchored by its iconic hilltop church, the village carries a deep cultural rhythm shaped by centuries of tradition, close-knit community, and a distinctly susegad way of life.

Winding lanes, Portuguese-era homes, and lush green surroundings create a setting that feels private, grounded, and enduring—while remaining effortlessly connected to North Goa's urban and coastal destinations.



**Socorro: A Quiet Corner of Goa for
Elegant, Contemporary Living**



Aradi, Socorro An Elevated Enclave of Quiet Luxury

Nestled within Socorro, Aradi is one of the village's most coveted residential pockets –slightly elevated, naturally serene, and defined by sweeping field and hill views. Known for its exclusivity, Aradi is home to distinguished families, returning NRIs, and thoughtfully designed luxury residences that value privacy and openness in equal measure.

Gentle breezes, winding lanes, and uninterrupted green vistas lend the neighbourhood a retreat-like quality, while seamless access to Porvorim, Panaji, Mapusa, reputed schools, daily conveniences, and the MOPA International Airport ensures modern connectivity without compromise.

Central Yet Uncrowded: Minutes from Panaji, Porvorim, North Goa's beaches, dining, and international schools—while remaining insulated from tourist-heavy zones.

High-Quality Residential Demand: Preferred by NRIs, returning Goans, and discerning end-users seeking privacy, elevation, and established neighbourhoods—supporting long-term value and liquidity.

Effortless Global Connectivity: Convenient access to both Dabolim and the new MOPA International Airport enhances lifestyle ease and strengthens investment appeal.

Green, Elevated Living: Open field and valley views, clean air, and natural surroundings offer a daily sense of retreat—rare and increasingly valued in North Goa.

Enduring Lifestyle & Value: A strong cultural fabric, heritage landmarks, and modern infrastructure combine to deliver both a rewarding way of life and dependable appreciation.



Why Choose Socorro & Aradi

ECRA represents Elegance, Craft, Roots, and Aura—four principles that define how our homes are conceived and experienced. Elegance is expressed through premium, timeless design; Craft through Ricco’s expertise in advanced construction and carefully sourced materials; Roots through a deep respect for Goa’s architectural and cultural heritage; and Aura through the intangible sense of belonging that transforms a residence into a home.

Guided by these values, ECRA by Ricco creates limited, thoughtfully designed villas that age gracefully, hold enduring value, and offer a lifestyle grounded in authenticity and permanence.



ECRA

BY RICCO

Elegance • Craft • Roots • Aura

PRESENTING
The Socorro Twins

Two sanctuaries. Elevated living.

Villa Salvora

Villa Amparo

The Socorro Twins - *A tale of Shelter and Strength*

Villa Salvora

The Protector

Villa Salvora takes its name from the Portuguese root *salvar*—to save, to protect. Conceived as the more commanding of the two residences, Salvora is designed to hold space with quiet strength.

Elevated volumes, expansive views, and a sense of architectural assurance create a home that feels grounded and reassuring. This is a residence shaped to protect privacy, preserve calm, and offer permanence—an anchor for life lived with intention.

Villa Salvora stands not as a statement, but as a safeguard: of time, of peace, and of the life within its walls.

Villa Salvora

The Sanctuary

Derived from the Portuguese word for shelter and refuge, Villa Amparo is envisioned as a place of embrace.

Its name reflects the home's softer, more nurturing character—where light-filled spaces, fluid movement, and openness invite stillness and ease. Designed to receive rather than impose, Amparo offers a sense of arrival that is immediate and restorative.

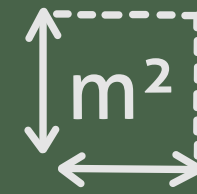
It is a home that welcomes return, encourages pause, and restores balance. Villa Amparo is not merely lived in—it is felt, offering sanctuary in its truest sense.



Villa Salvora



4 beds



300 m²



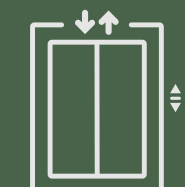
**Private
Swimming pool**



Jacuzzi



2 car parks



Private Elevator

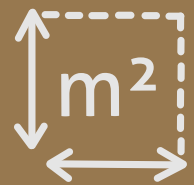


G+2

Villa Amparo



5 beds



323 m2



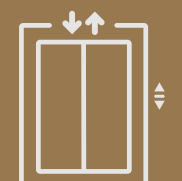
**Private
Swimming pool**



Jacuzzi



2 car parks



Private Elevator



G+2

















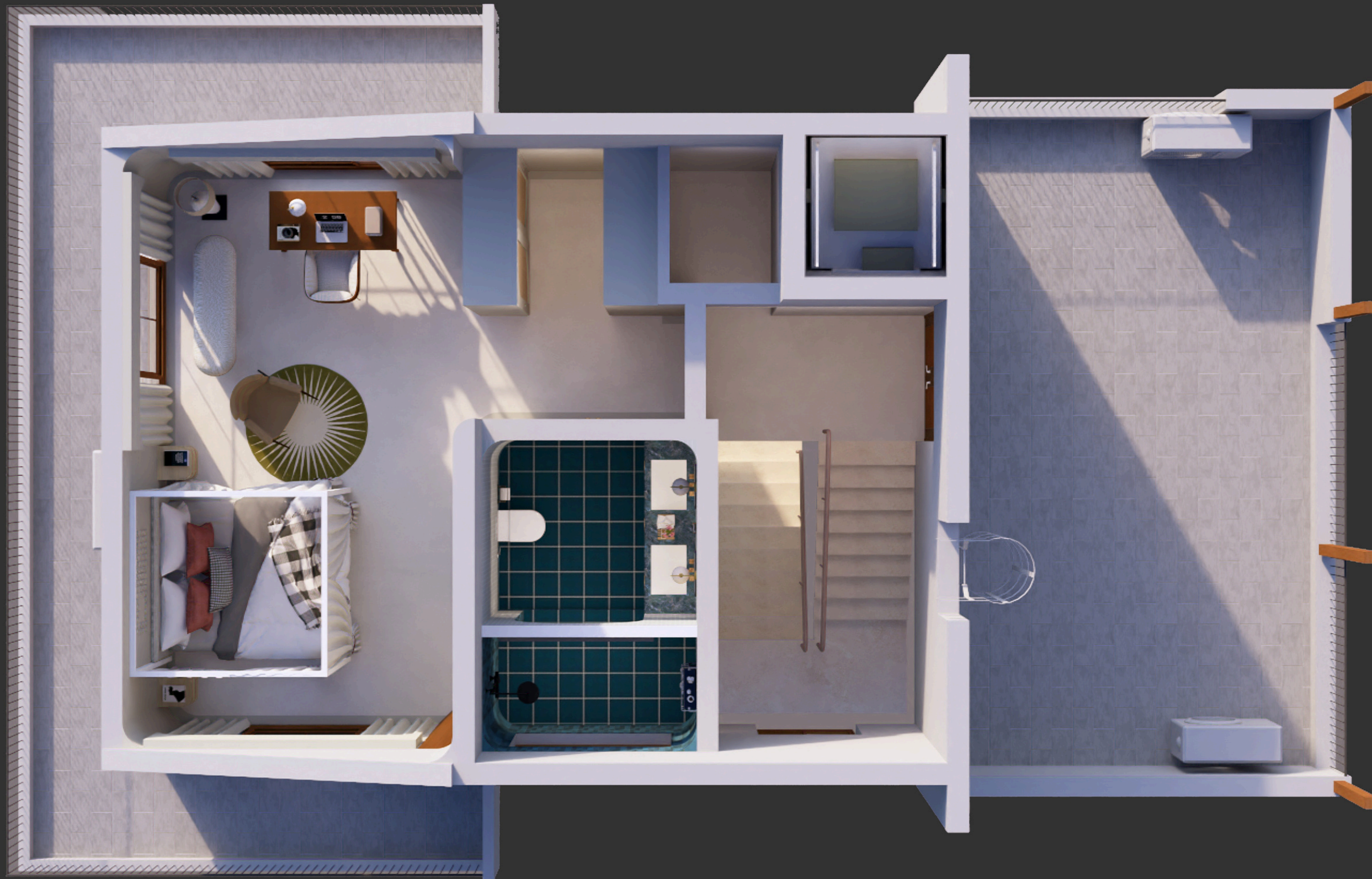




First Floor Layout



Ground Floor Layout



Second Floor Layout

Villa Features & Amenities



**Elevate master
bedroom**



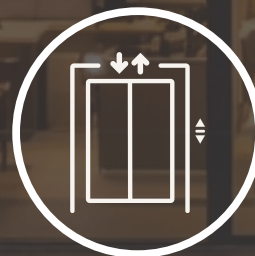
**Open Bar
Area**



**2 Car
Parks**



**High Ceiling
Living and Dining**



**Private
Elevator**



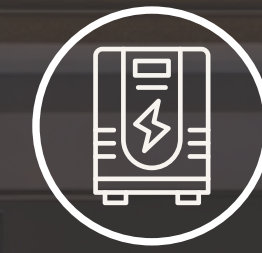
**Servant
Quarters**



**Modular
Kitchen**



**Garden
Space**



**Power Back
up 40 KVA**



**Private
Pool**



**CCTV &
Security Cabin**



WiFi



Jacuzzi



**Basement
Gaming Area.**



**Power Back
up 40 KVA**

Architectural Highlights & Key Features

At The Succour Twins, architecture is guided by light, openness, and elevation. Double-height living spaces and expansive glazing draw the surrounding valleys into the home, while a private elevator connects each level with effortless ease. The elevated master suite, complete with a walk-in wardrobe and Jacuzzi, crowns the residence as a private retreat above it all.

Life flows seamlessly outdoors, with private pools beside the dining area, landscaped gardens, and terraces designed for unhurried gatherings. Thoughtful inclusions—an open bar and hot pantry, flexible basement spaces, and integrated security—support a lifestyle that feels intuitive, refined, and deeply connected to its natural setting.



Design Inspiration: Modern Contemporary



Why Modern Contemporary ?

The Succour Twins adopt a modern contemporary design to reflect today's way of living—open, fluid, and connected to nature. Clean lines, generous volumes, and expansive glazing invite light and landscape into the home, while a restrained architectural language ensures timeless appeal. The result is a calm, elevated expression that complements Aradi's natural setting and allows the villas to feel both relevant today and enduring over time.

Attractions & Locations of interest.

Natural Wonders Water Sites

Socorro Plateau &
Nature Walks (2 kms)
Torda Lake & Pilerne Lake
(5 kms)
Salvador do Mundo Lake
(2 kms)
Mandovi River & Chorao
Island (Salim Ali Bird
Sanctuary) (6Kms)



Temples

Shree Sateri Mulgaonkar
Temple (just beyond
Aldona) 3 Kms



Churches hertiage sites

St. Our Lady of Succour
Church ,Nossa Senhora
do Socorro 1.5km (5
minutes)

Cultural & recreational Attractions

Mapusa Market (7 kms)
Panjim (Capital) 9 Kms
Arpora Night Market &
Entertainment Hubs (10
kms)



Accessibility Airports

MOPA airport 27 kms away
(25 mins drive)
Dabolim Airport 35 Kms



Nearest beach

Baga beach 13 kms
Calangute & Candolim 15
kms
Anjuna beach 20 Kms

Where The Socorro Twins Sit in North Goa



To Mall de Goa 5 mins.
To Panaji 15 mins.
To Calangute Beach 20–25 mins.
to MOPA Airport 35–40 mins.

Why chose The Twins?

A Rare Dual-Villa Offering in Aradi

Two individually crafted villas, positioned side-by-side yet designed for complete independence—ideal for families, legacy ownership, or those who value both togetherness and privacy.

Aradi, Where Socorro Rests at Its Best

Elevated, green, and discreet, Aradi is Socorro's most composed address—offering open valley views, low density, and a sense of calm that is increasingly rare in North Goa.

Homes Shaped by Light, Space, and Stillness

Double-height living areas, 20-foot glazing, and fluid layouts allow light and landscape to define the interiors—creating homes that feel expansive yet grounded.

Luxury That Lives Well

From private pools and jacuzzi suites to elevators, gardens, and entertainment-ready spaces, every feature is designed to serve daily life, not just first impressions.

Enduring Value, Not Short-Term Noise

Limited supply, strong residential demand, and seamless access to Panaji, Porvorim, beaches, and both airports make The Socorro Twins a considered investment—quietly confident, long-term, and rare.

The Socorro Twins by ECRA

*Two Homes Shaped by Goa
– And by the Life You Choose*

For Private Viewings Connect with

ECRA by Ricco:

Andrew + 91 7709582243

Nathan + 91 9356989662

Address: Office No. 15 6th Floor, Buildmore Business Park,
Khorlim, Mapusa, Goa 403507

