



ECRA

BY RICCO

An ECRA home—crafted for those who value space, calm, and character.

“Goa isn’t bought for returns alone—it’s chosen for the life it gives back”

Goa: “A Living Legacy, Not a Passing Trend”

Goa’s strength as a second-home destination has never rested on beaches alone. It endures because people stay—to live, return, and belong. While markets rise and fall, Goa continues to evolve into a place for permanent lifestyles, not seasonal escapes.

Clean air, open landscapes, and pristine coastlines remain its natural advantage. Yet what truly sustains Goa’s appeal is its deeply rooted culture, preserved heritage, and welcoming communities—a social fabric that has remained intact even as the state modernises. Villages, traditions, and everyday rituals continue to define life here, creating stability that few destinations can replicate.

As infrastructure improves and buyers seek meaningful, slower living, Goa stands apart as India’s most mature and resilient second-home market. Not because it changes with trends—but because it stays true to itself.

Goa will always be chosen—not just for where it is, but for how it lives.

THE SPIRIT OF ALDONA

Nestled between verdant hills and the tranquil Rio de Mapuca (River of Mapusa), Aldona is one of Goa's most beautiful and enduring villages—just 14 km from Panaji and minutes from Mapusa, yet worlds away in spirit.

Life here unfolds gently. Shaded lanes, Portuguese heritage homes, and a warm, multicultural community create a rhythm rooted in Goa's timeless susegad way of life. Mornings begin with river breezes and birdsong; evenings end beneath golden sunsets over historic landmarks like St. Thomas Church (1596) and Corjuem Fort.

For those seeking more than a holiday home, Aldona offers permanence—a place to belong, not just to arrive.



**Aldona : For those who
want Goa to feel Like home**

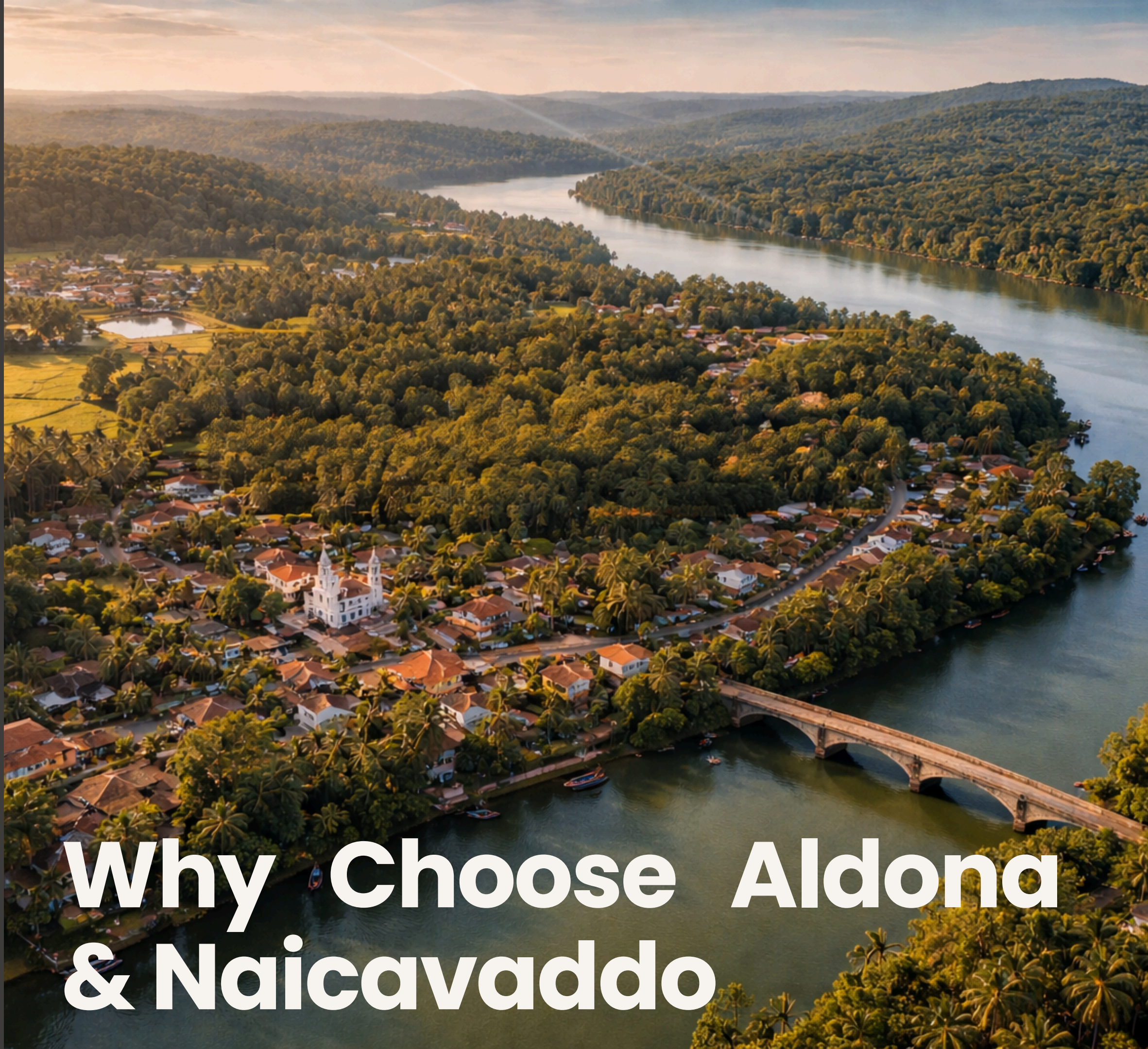


Naicavaddo The Jewel of Aldona

Naicavaddo, Aldona's most cherished enclave, captures the essence of refined Goan village living. Lined with elegant Portuguese-era homes, blooming gardens, and winding lanes, it offers peaceful exclusivity while remaining close to Aldona's cultural landmarks, essential services, and daily conveniences.

A spirited local community, vibrant festivals like São João, and welcoming neighbourhood spaces give the area its warmth and character.

With seamless connectivity to Mapusa, Panaji, and North Goa, Naicavaddo balances heritage, privacy, and accessibility—making it not just a place to live, but a lifestyle rooted in beauty, culture, and belonging.



Timeless beauty: Green valleys, river views, and lovingly preserved heritage architecture.

Vibrant culture: Rich traditions, community celebrations, and a cosmopolitan yet comforting Goan ethos.

Tranquility meets convenience: Retreat-like calm paired with all the benefits of city connectivity and amenities.

Warmth & Welcome: A genuine sense of hospitality unique to Goan village life, where every neighbour feels like family and every day feels like a celebration.

For those seeking a villa that is more than just a home, but a gateway to Goa's most coveted lifestyle, Aldona—and particularly Naicavaddo—offers a canvas for your dreams. Become a part of Aldona's living story and experience the magic for yourself.

Why Choose Aldona & Naicavaddo

ECRA represents Elegance, Craft, Roots, and Aura—four principles that define how our homes are conceived and experienced. Elegance is expressed through premium, timeless design; Craft through Ricco’s expertise in advanced construction and carefully sourced materials; Roots through a deep respect for Goa’s architectural and cultural heritage; and Aura through the intangible sense of belonging that transforms a residence into a home.

Guided by these values, ECRA by Ricco creates limited, thoughtfully designed villas that age gracefully, hold enduring value, and offer a lifestyle grounded in authenticity and permanence.



ECRA

BY RICCO

Elegance • Craft • Roots • Aura

PRESENTING

Villa Serica

A luxury villa nestled in the heart of Aldona, Goa.



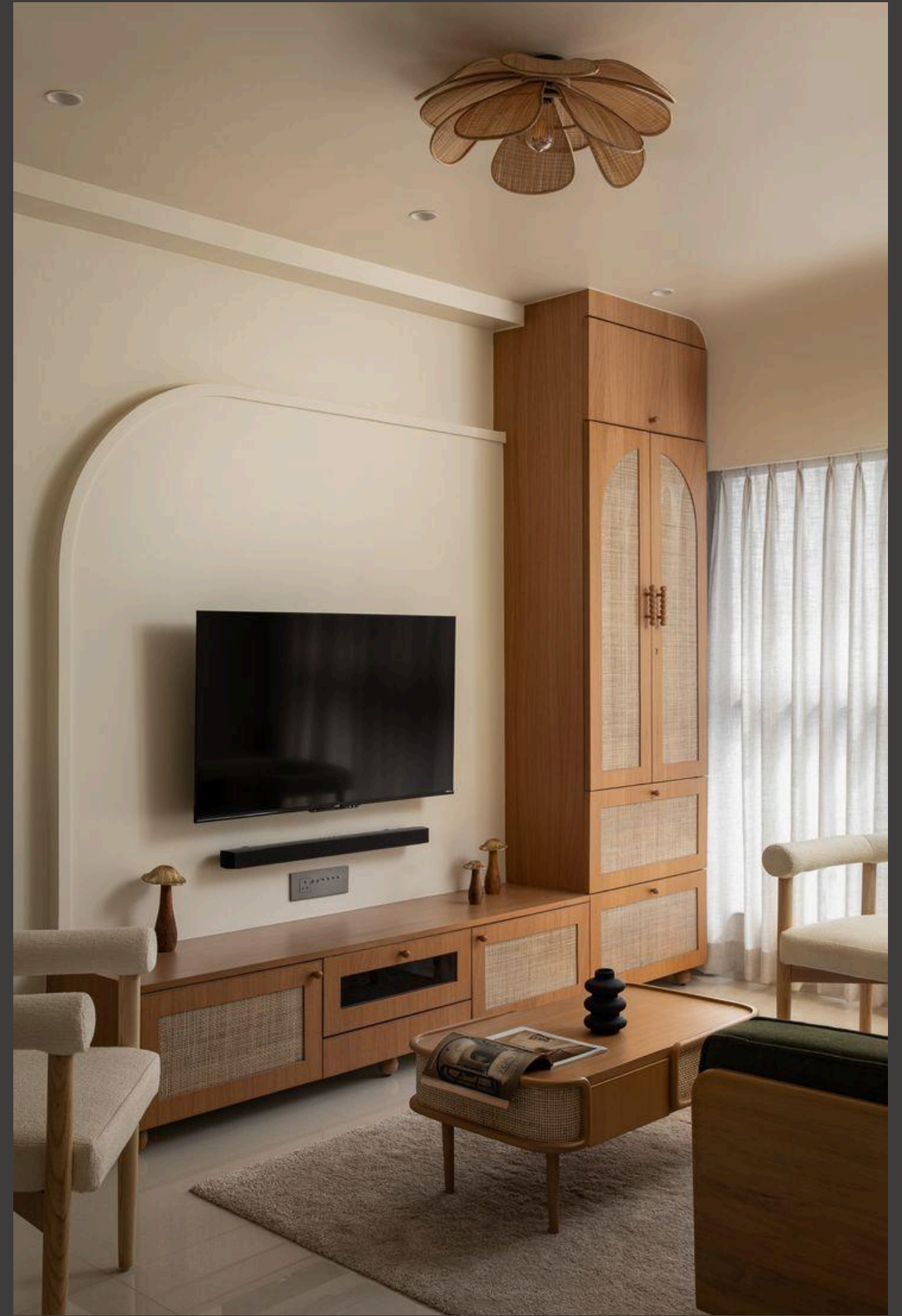






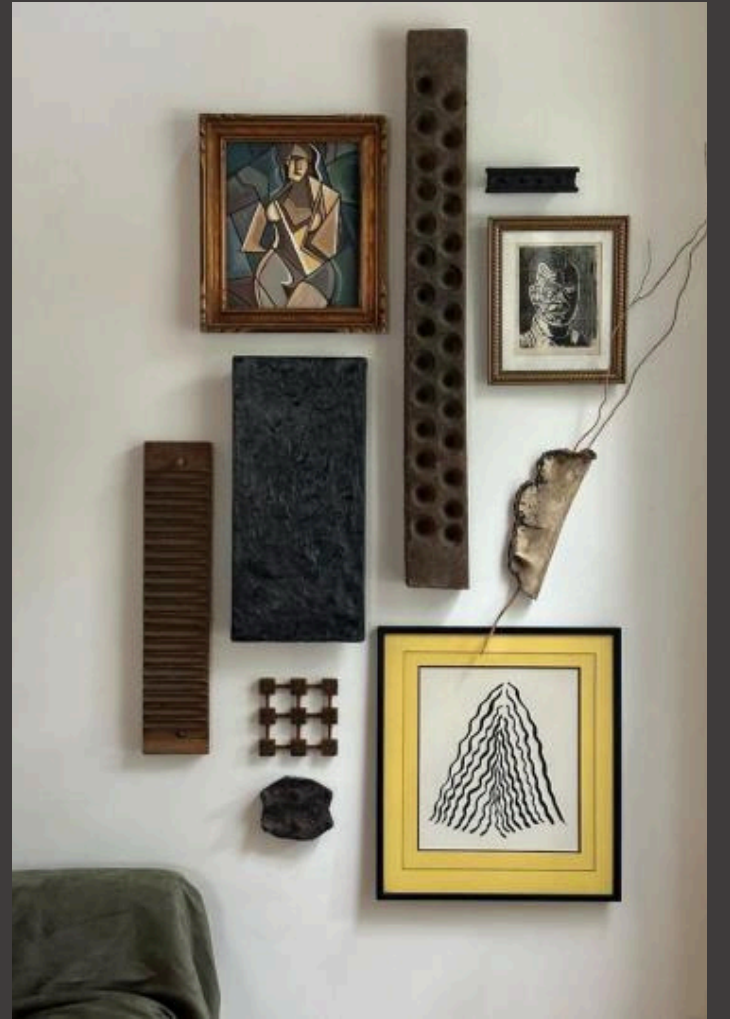


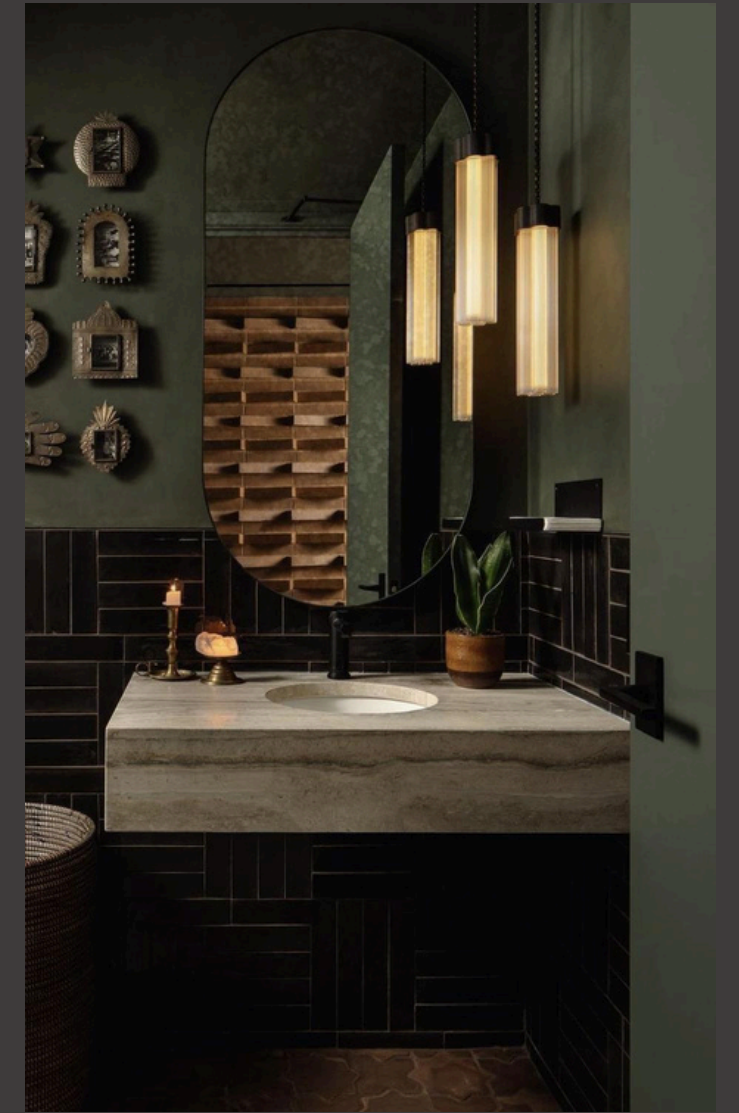






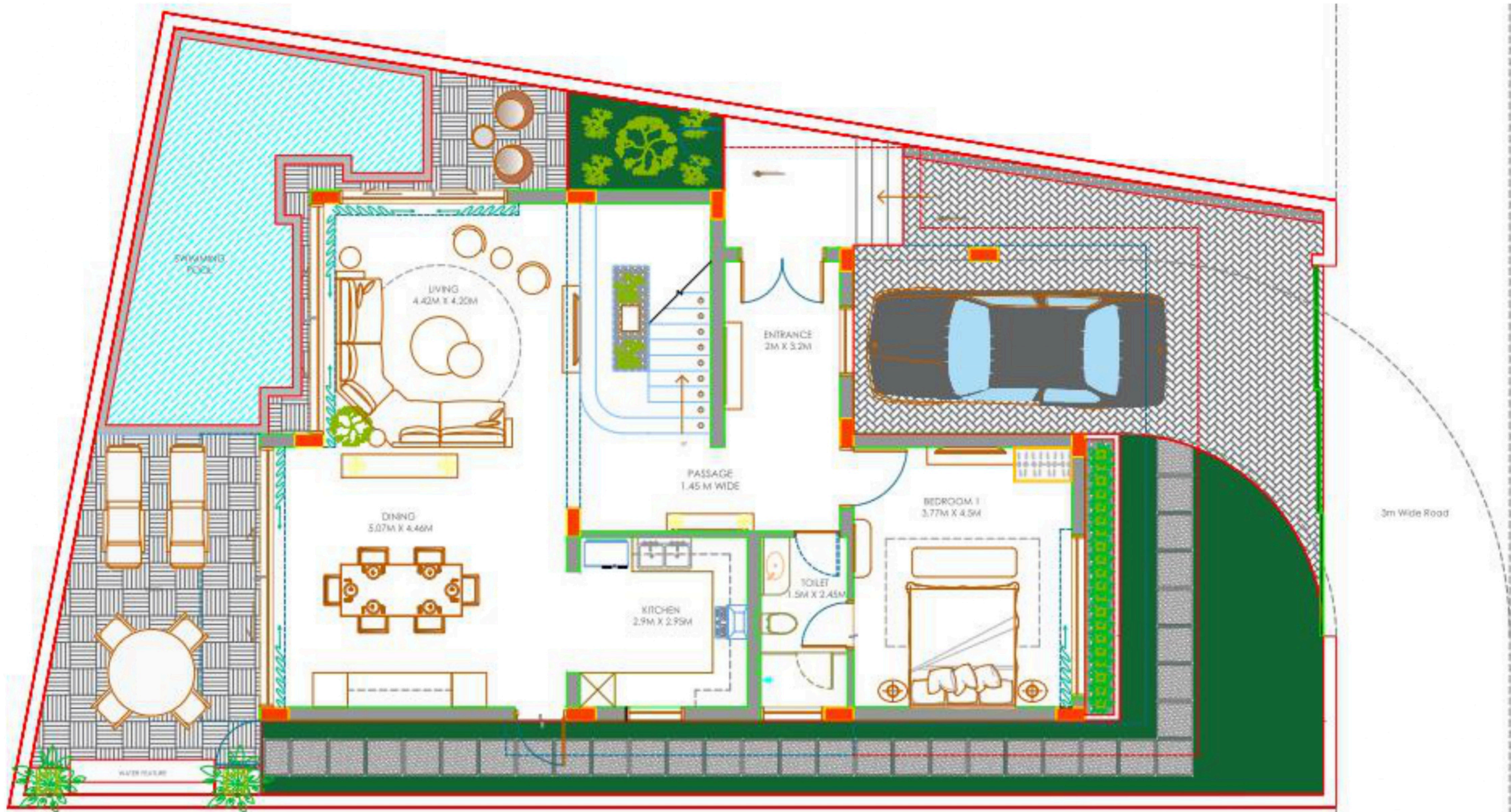




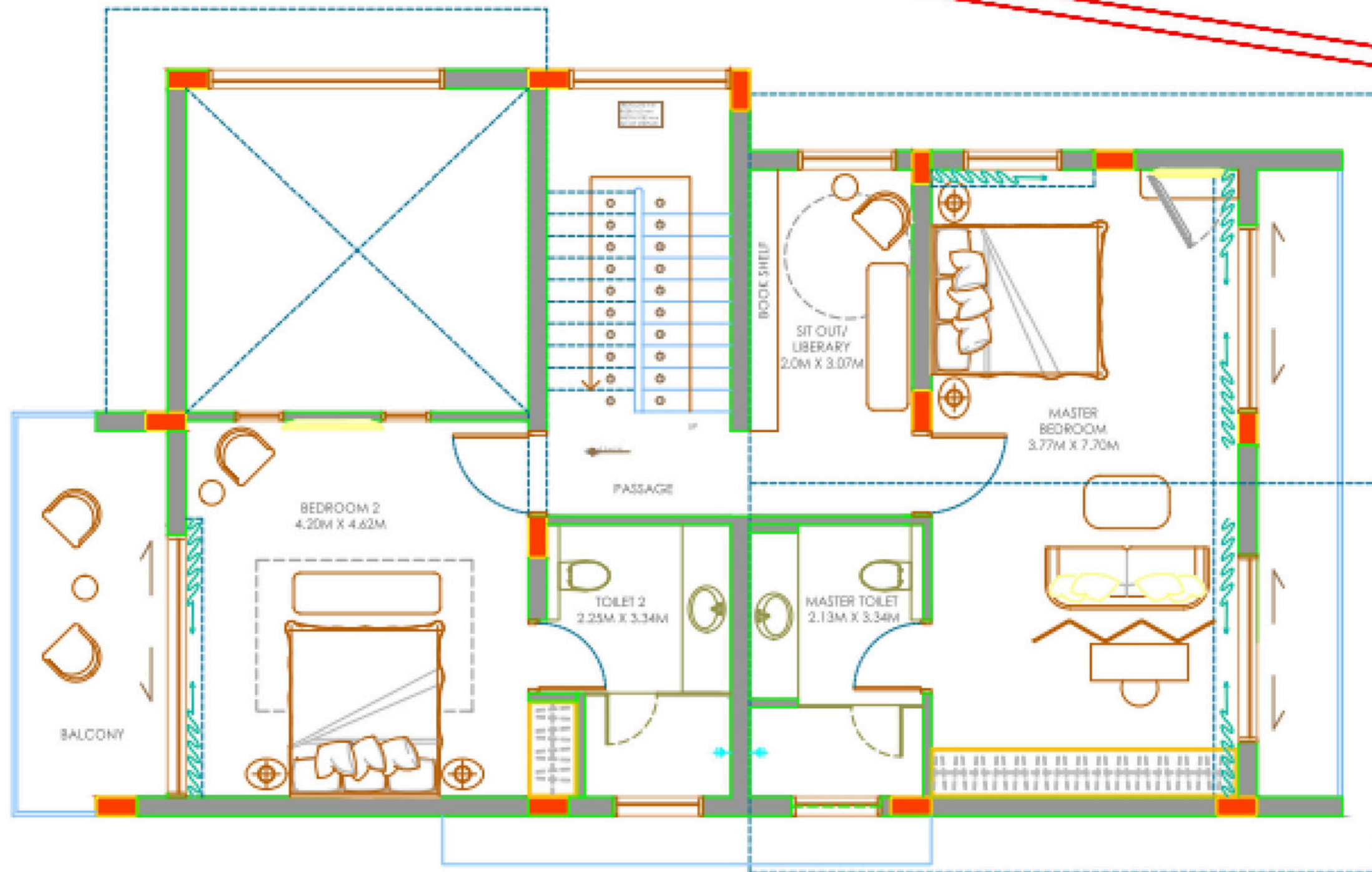


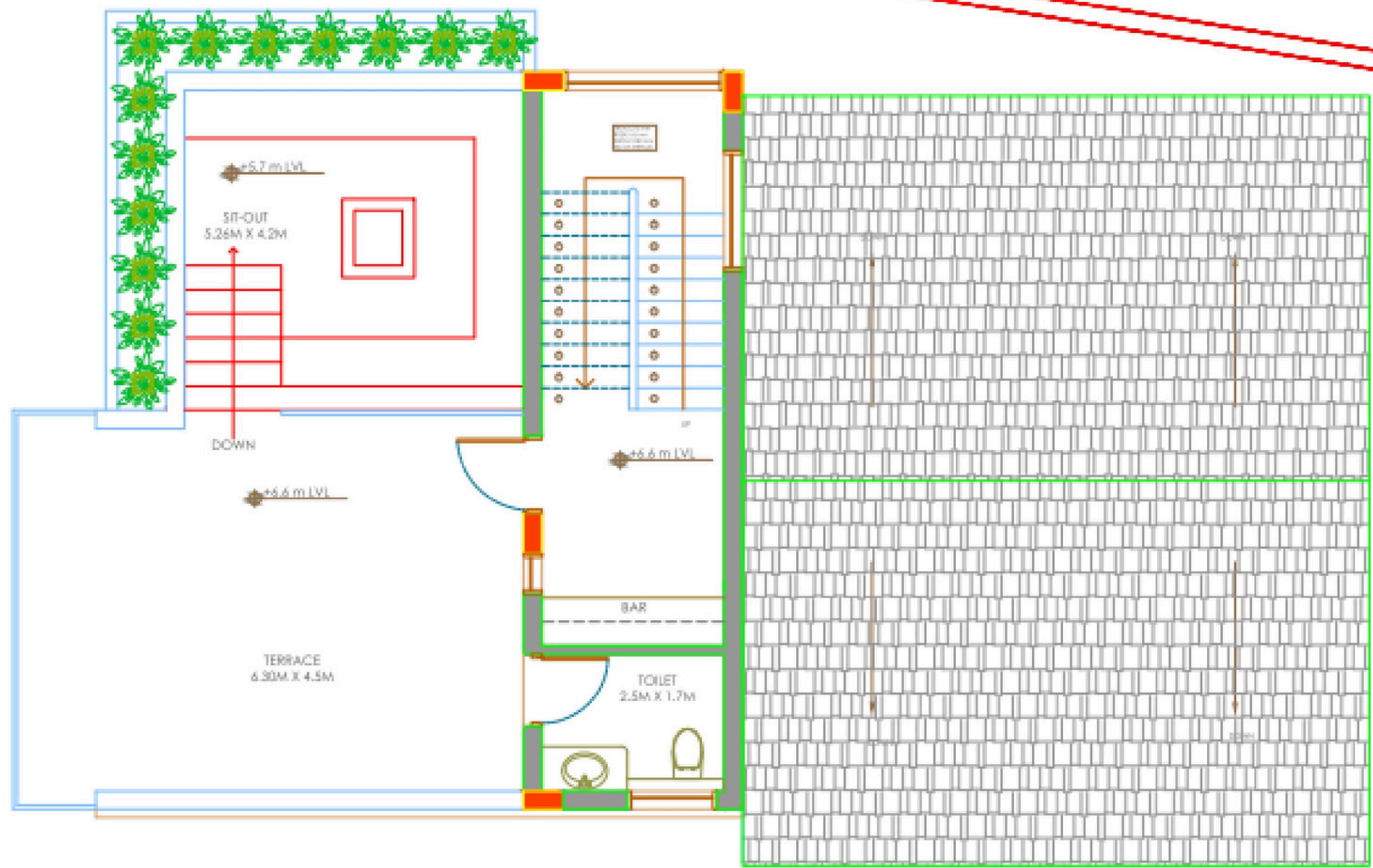




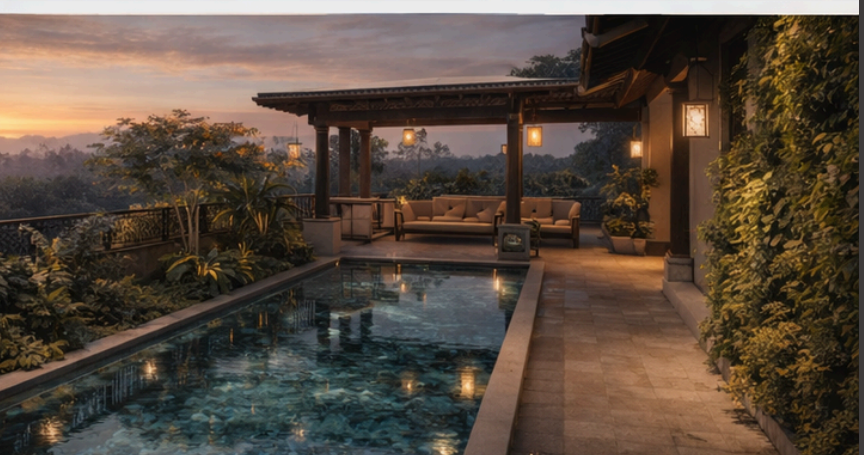


01 GROUND FLOOR PLAN
Scale: 1:40





Villa Features & Amenities



 **270** Plot Area
sq meters

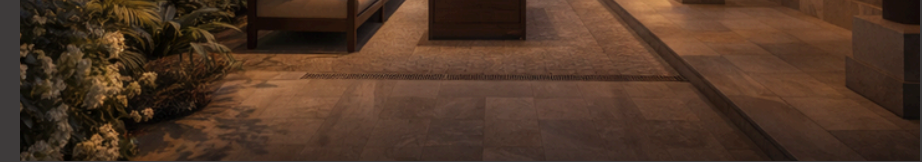
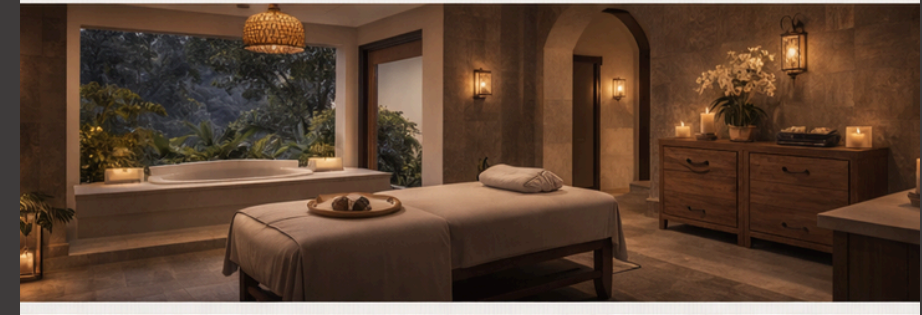
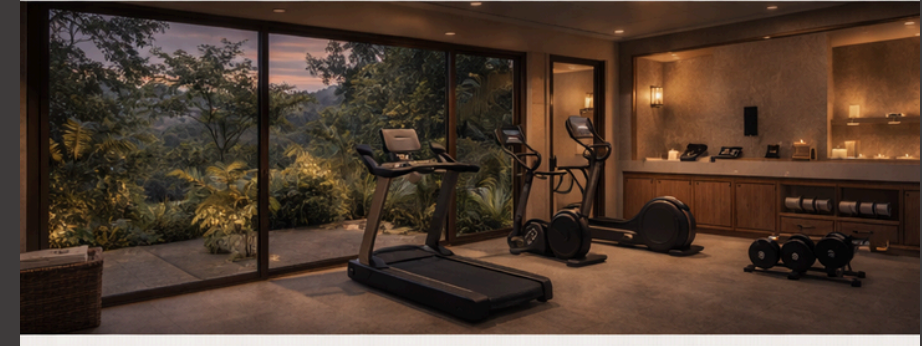
 **300** Built up Area
sq meters

 **3** Bedrooms

 **4** Bathrooms

 **1** Covered
Car park

 **1** Open
Car park



 Dining

 Living

 Garden

 Swimming
pool

 Office
Study

 Roof top
Lounge

Architectural Highlights & Key Features

Villa Serica is an independent luxury residence by ECRA, a subsidiary of Ricco Constructions, thoughtfully designed to elevate everyday living. A contemporary layout unfolds through spacious, light-filled interiors, anchored by an airy double-height living room that creates a sense of openness and calm.

Expansive double-height windows, a glass-and-aluminium pergola, and a uniquely landscaped garden enhance the seamless dialogue between indoors and outdoors.

Carefully planned spaces—including a generous deck, dedicated study, and walk-in wardrobe—reflect a refined approach to modern living, where comfort, clarity, and architectural elegance come together effortlessly.



Design Inspiration: Indo-Chinese



Why Indo
Chinese ?

“Indo-Chinese design was chosen for its quiet balance –where structure meets flow, light moves freely, and spaces breathe naturally, making it both timeless in character and perfectly attuned to Goa’s climate and way of life.”



Attractions & Locations of interest.

Nearest beach

Calangute / Baga beach
14-16 km away (25 - 30) mins
drive



Natural Wonders Water Sites

Mapusa River & Riverside Walks
Mayem Lake (12 kms)
Mangrove Trails & Vanxim



Temples

Shree Sateri Mulgaonkar
Temple (just beyond Aldona)

Mahadev Temple, Bicholim (18
kms away)



Cultural & recreational Attractions

Mapusa Market (8 kms)
Aldona Cable-Stayed Bridge
Arpora Night Market &
Entertainment Hubs (25 mins
away)



Churches heritage sites

St. Thomas Church, Aldona
(2 kms)
Corjuem Fort (4 kms)
Basilica of Bom Jesus, Old Goa
(13 kms away)



Accessibility Airports

MOPA airport 25 kms away (25
mins drive)
Thivim Railway station (10 kms
away)



Location & Surroundings – VILLA SERICA IN ALDONA

Villa Serica is located in the tranquil village of Aldona, within the exclusive Naicavaddo enclave, offering both peaceful privacy and effortless accessibility.

Historic landmarks like St. Thomas Church and Corjuem Fort are nearby, while Mapusa's markets, beaches, and MOPA International Airport remain within easy reach—blending countryside calm with convenience.



Why Villa Serica ?

Peaceful Location: Set within the serene enclave of Naicavaddo, the villa offers peaceful privacy while remaining effortlessly connected to everyday conveniences, heritage landmarks, Goa's beaches, and MOPA International Airport.

Spacious, Designer Living: Enjoy airy dramatic double-height ceilings, premium modern finishes, and seamless indoor-outdoor flow every detail crafted for elegance and comfort.

Resort-Style Amenities: a good size swimming pool, a lush private garden, expansive deck, and a roof terrace with a stunning sunken lounge and bar.

Major Highlight: The villa's rooftop bar and lounge areas open up to breathtaking panoramic views of the neighboring valley—perfect for sunset cocktails, entertaining, or simply unwinding above it all. This signature feature truly sets your home apart and brings nature and luxury together, right at your doorstep.

Effortless Access, Tranquil Surroundings: You'll experience peace, privacy, and connectivity—just steps from North Goa's best: heritage churches, river cruises, nature walks, and emerging cafés.

Flexible Ownership: With clear title, bank loan eligibility, and flexible payment plans, your luxury villa is within easy reach.

Villa Serica by ECRA

*A Home That Belongs to Goa
– And to You*

For Private Viewings Connect with

ECRA by Ricco:

Andrew + 91 7709582243

Nathan + 91 9356989662

Address: Office No. 15 6th Floor, Buildmore Business Park,
Khorlim, Mapusa, Goa 403507

